

R-Flex™ Multipurpose Coupling System



- Corrects for angular sensor shaft misalignments
- Compatible with all our RVDTs & RVITs
- Mates to multiple shaft sizes
- Machined from high-strength aluminum alloy
- Light weight

DESCRIPTION

The R-Flex™ coupling system is a versatile, easily installed coupling device that corrects for most types of angular sensor shaft misalignments. R-Flex™ provides excellent hysteresis-free repeatability. The unique six-beam R-Flex™ coupling adapter design provides superior performance under the most severe misalignment conditions. R-Flex™ is the perfect coupling for all our angular sensors as it does not degrade the repeatability or resolution. The coupling adapter is machined from high strength, yet flexible, aluminum alloy (black anodized). Its six-beam construction prevents windup under most operating conditions and virtually eliminates coupling induced phase lag in high speed closed loop control applications. Four (4) provided insert bushings allow mating the sensors with five (5) different shaft diameters.

FEATURES

- Mates to five (5) shaft sizes
- Integral clamps
- Six-beam construction
- Eliminates windup
- Hysteresis free
- Machined from aluminum alloy
- Anodized (Black) for corrosion protection
- Light weight

APPLICATIONS

- Use with all our RVDTs and RVITs
- For correction of:
 - Angular misalignment
 - Parallel misalignment
 - Skewed misalignment
 - Axial motion
 - Rotary oscillation
- Ideal for high speed closed loop controls

R-Flex™ Multipurpose Coupling System

PERFORMANCE SPECS

Dimensions		Misalignment Correction	
Outside Diameter	0.75" [19.05 mm]	Angular Offset	2 degrees
Length	0.75" [19.05 mm]	Parallel Offset	.005" [0.13mm]
Clamping Length	.2" [5 mm]	Axial Motion	.005" [0.13mm]
Sensor Shaft Diameter (B1)	3/16" (0.1875") [4.76]		
Mating Shaft Diameters:		Construction	
With 0.187 Insert Bushing	3/16" (0.1875") [4.76]	Coupling Adapter Material	2024-T3.51 or 7075-T6
With 5mm Insert Bushing	0.197" [5mm]	Coupling Adapter Finish	Black anodized
With 6mm Insert Bushing	0.236" [6mm]	Insert Bushing Material	G10 Phenolic (natural color)
With 0.250 Insert Bushing	0.250" [6.35mm]		
Without Insert Bushing	0.394 [10mm]		

DIMENSIONS

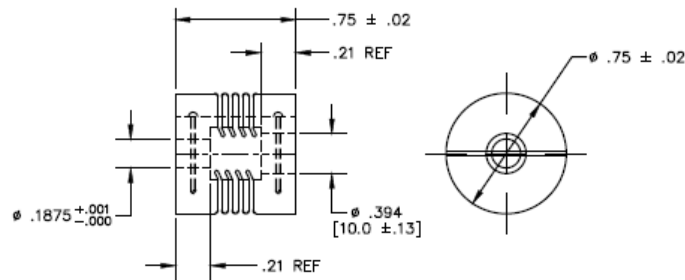


Figure 1: Coupling Adapter (Dimensions in inch [mm])

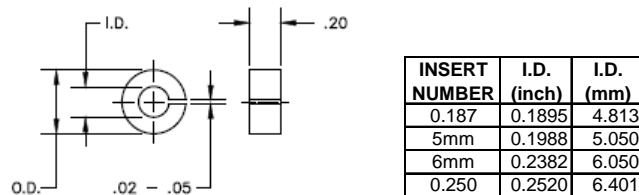


Figure 2: Insert Bushing (Dimensions in inch [mm])

联系方式



深圳市亿为测控电子有限公司
Shenzhen Bill-Well Measurement & Control Electronics Co., Ltd.

广东省深圳市南山区创业路怡海广场东座2407 邮编：518000

电话：+86 755 2641 9890 传真：+86 755 2641 9680

电子邮箱：sales@bill-well.com