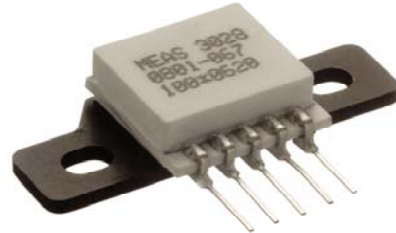


Model 3058A Accelerometer



Piezoresistive MEMS
DC Response, Gas Damped
Screw Mounted
Integral Temp Compensation



The **Model 3058A** is a silicon MEMS accelerometer with integral temperature compensation. The accelerometer is packaged on a ceramic substrate with a metal bracket which can be used to bolt the sensor to the mounting location. The accelerometer is offered in ranges from $\pm 2g$ to $\pm 100g$ range and provides a flat frequency response to minimum 1500Hz. The silicon MEMS sensor is gas damped and incorporates over-range stops for high-g shock protection.

For a similar accelerometer designed for adhesive mounting, see the model 3052A.

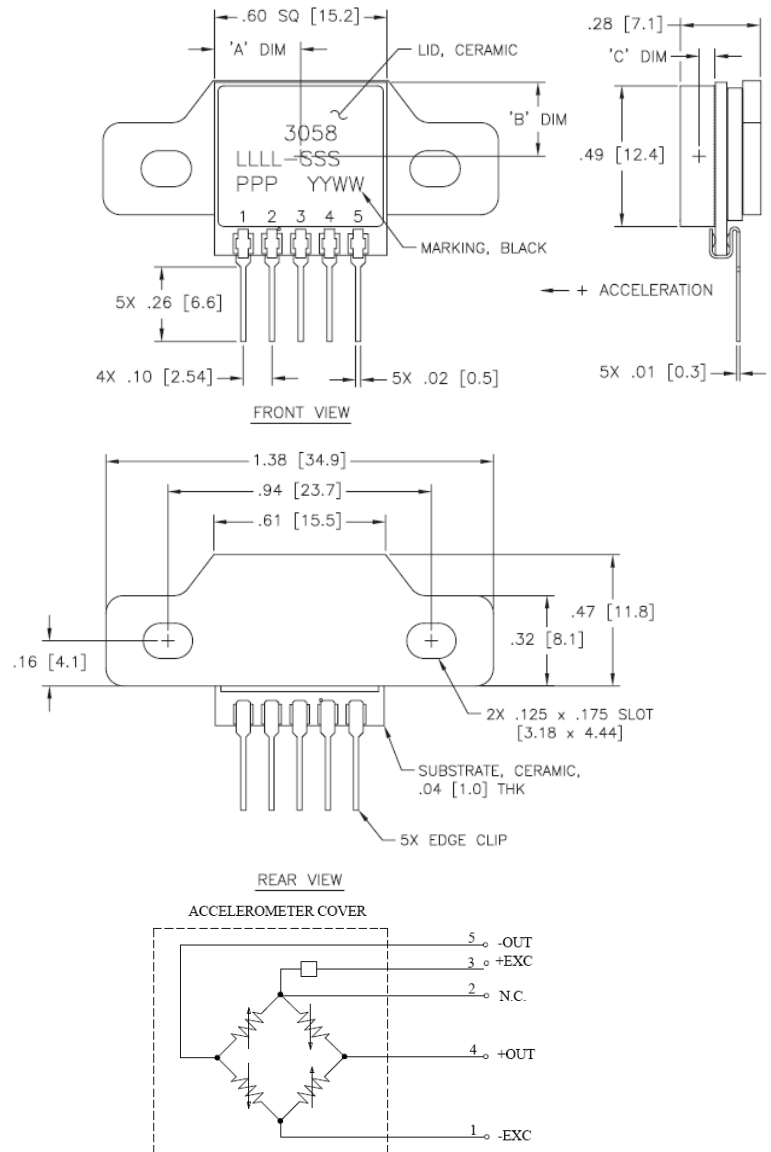
FEATURES

- Bolt Mounted
- $\pm 1.0\%$ Non-Linearity
- 0 to $+50^{\circ}\text{C}$ Temp Compensation
- Built-in Over-range Stops
- Low Power Consumption

APPLICATIONS

- Vibration & Shock Monitoring
- Motion Control
- Impact & Shock Testing
- Transportation Measurements
- Embedded Applications
- Machinery

dimensions



Model 3058A Accelerometer

performance specifications

All values are typical at +24°C, 100Hz and 5Vdc excitation unless otherwise stated. Measurement Specialties reserves the right to update and change these specifications without notice. Standard product parameters are described in PSC-1002 for Embedded DC Accelerometers.

Parameters

DYNAMIC

	±2	±5	±10	±20	±50	±100	Notes
Range (g)							
Sensitivity (mV/g) ¹	8.0-16.0	4.8-7.2	2.4-3.6	1.2-1.8	0.48-0.72	0.24-0.36	@5Vdc Excitation ±5%
Frequency Response (Hz)	0-150	0-250	0-350	0-550	0-1000	0-1300	
Natural Frequency (Hz)	700	800	1000	1500	4000	6000	
Non-Linearity (%FSO)	±1.0	±1.0	±1.0	±1.0	±1.0	±1.0	
Transverse Sensitivity (%)	<3	<3	<3	<3	<3	<3	<1 Typical
Damping Ratio	0.7	0.7	0.7	0.7	0.6	0.5	
Shock Limit (g)	3000	3000	3000	3000	5000	5000	

ELECTRICAL

Zero Acceleration Output (mV)	±2						Differential
Excitation Voltage (Vdc)	2.7 to 12						
Input Impedance (Ω)	1200-6500						
Output Impedance (Ω)	1200-6500						
Insulation Resistance (MΩ)	>100						@50Vdc
Residual Noise (μV RMS)	10						Maximum
Ground Isolation	Isolated from Mounting Surface						

ENVIRONMENTAL

Thermal Zero Shift (%FSO/°C)	±0.060						0 to +50°C
Thermal Sensitivity Shift (%/°C)	±0.060						0 to +50°C
Operating Temperature (°C)	-40 to +125						
Compensated Temperature (°C)	0 to +50						
Storage Temperature (°C)	-40 to +125						
Humidity	Epoxy Sealed, IP61						

PHYSICAL

Case Material	Aluminum Flange, Ceramic Cover
Weight (grams)	4.5
Mounting	2x #4-40 Mounting Screws
Mounting Torque	6 lb-in (0.7 N-m)

¹ Output is ratiometric to excitation voltage

Calibration supplied: CS-SENS-0100 NIST Traceable Amplitude Calibration at 100Hz

Optional accessories: 101 Three Channel DC Signal Conditioner Amplifier
140 Auto-Zero Inline Amplifier

ordering info

PART NUMBERING Model Number+Range+Electrical Connection

3058A-GGG-P

I | I _____ Electrical Connection (P=pins)
I | _____ Range (010 is 10g)

Example: 3058A-010-P
Model 3058A, 10g, Pins

联系方式



深圳市亿为测控电子有限公司
Shenzhen Bill-Well Measurement & Control Electronics Co., Ltd.

广东省深圳市南山区创业路怡海广场东座2407 邮编：518000

电话：+86 755 2641 9890 传真：+86 755 2641 9680

电子邮箱：sales@bill-well.com